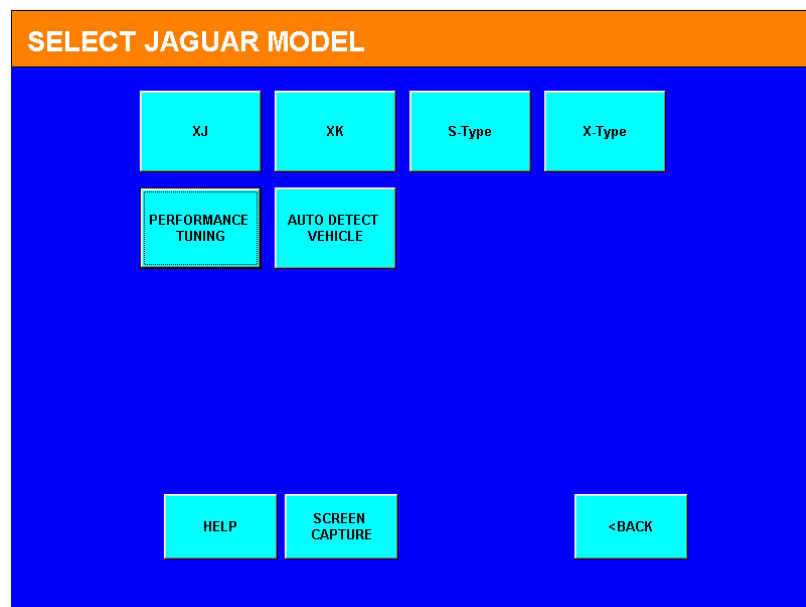


## Jaguar Performance Tuning

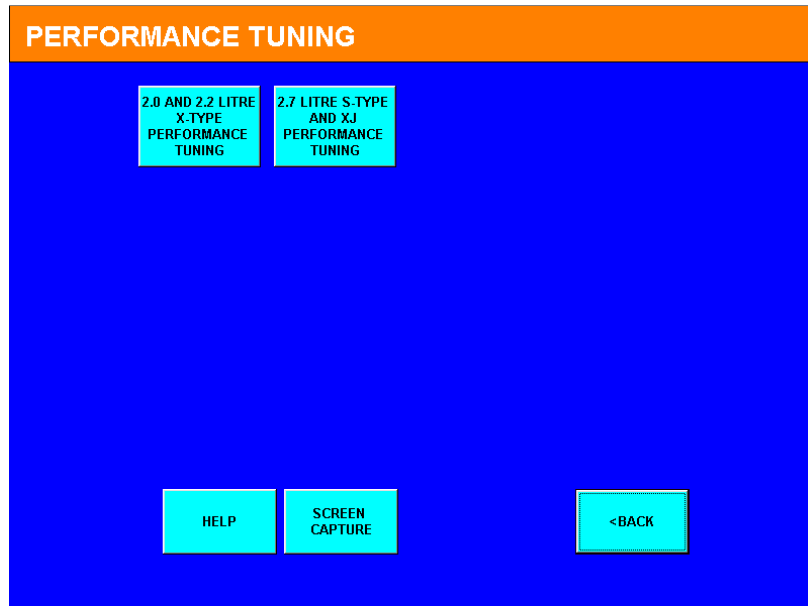
Performance tunes are available for all Diesel Jaguar vehicles. The 2.0 & 2.2 Litre “Puma” engine fitted to the X-type, and the 2.7 Litre twin turbo “Lion” engine fitted to the S-type and XJ.

In this example we shall look at the performance tuning process for the 2.7 Litre S-type Diesel.

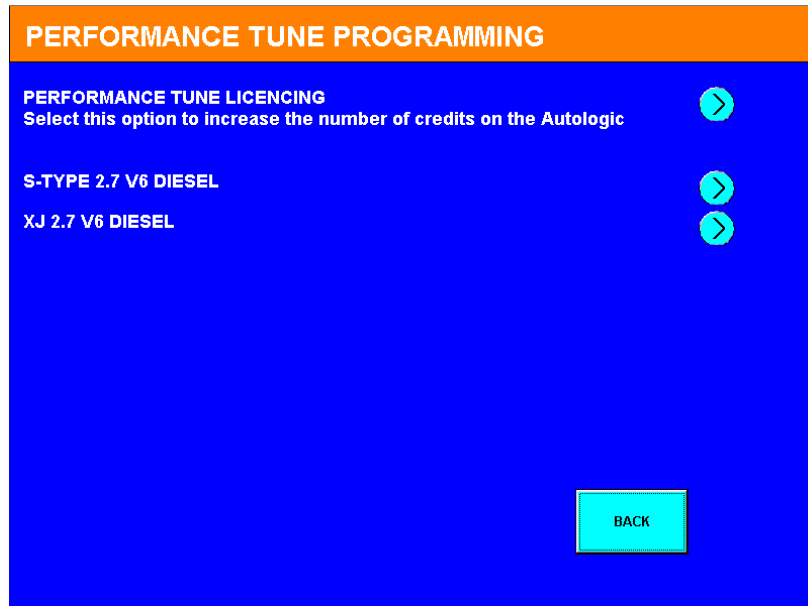
Initially, ensure that the Autologic is powered by its external power supply, and that the vehicle is on a stable power supply as, with the ignition on the vehicle can draw nearly 30 amps from the battery, and will flatten the battery very quickly. A flat battery during programming can damage the ECU.



Select the PERFORMANCE TUNING button.



Now Select 2.7 LITRE S-TYPE AND XJ PERFORMANCE TUNING.



The user is now presented with a menu with 3 options.

**PERFORMANCE TUNE LICENCING**

**CREDITS REMAINING**

In order to buy more credits, contact [DIAGNOS.CO.UK](http://DIAGNOS.CO.UK) with the **LICENCE REQUEST CODE**, the number of **CREDITS REQUIRED** and **SERIAL NUMBER** shown below.  
You will be provided with an **ENABLE CODE** that will increase the credit remaining.

**SERIAL NUMBER**

**LICENCE REQUEST CODE**

**LICENCE ENABLE CODE**

Select the “PERFORMANCE TUNE LICENCING” button

For each performance tune used, a licence credit must first be purchased from Diagnos. The number of current licences stored on the unit is shown in the “credits remaining” box.

The Autologic’s serial number is displayed, and a licence request code. To get a licence, contact Diagnos with these details. Once you have the licence code press the enter button.

ENTER ENABLE CODE

123-456-78 -

1	2	3	4	5	6	7	8	9	0	Backspace
Q	W	E	R	T	Y	U	I	O	P	-
A	S	D	F	G	H	J	K	L	;	+
Z	X	C	V	B	N	M	,	.	/	@
Shift	Space					←	→	Delete		
CLEAR			CANCEL				OK			

Enter the code and press OK.

**PERFORMANCE TUNE LICENCING**

**CREDITS REMAINING**

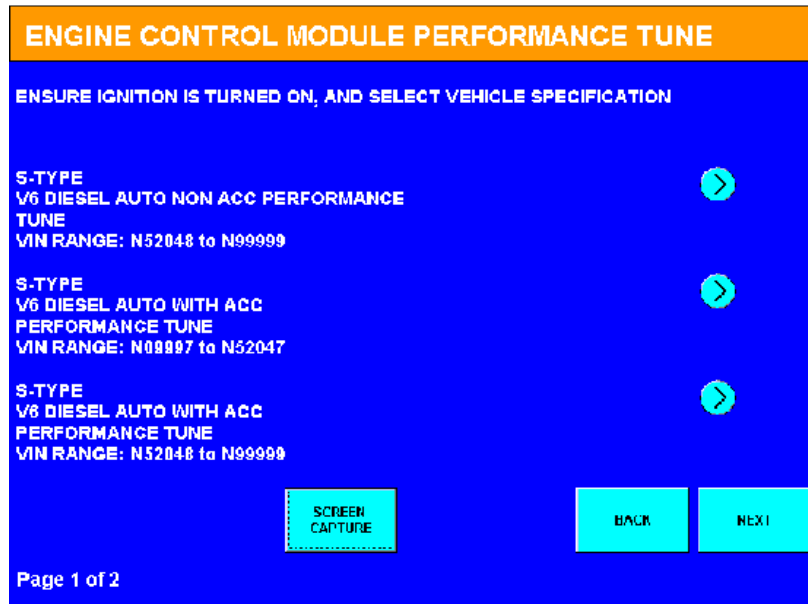
In order to buy more credits, contact [DIAGNOS.CO.UK](http://DIAGNOS.CO.UK) with the LICENCE REQUEST CODE, the number of CREDITS REQUIRED and SERIAL NUMBER shown below.  
You will be provided with an ENABLE CODE that will increase the credit remaining.

**SERIAL NUMBER**

**LICENCE REQUEST CODE**

**LICENCE ENABLE CODE**

The new number of credits is displayed on the Autologic. Now, return to the previous menu using the Back button, and select S-type.



The Autologic then displays a list of possible specifications for the S-type to be programmed. Select the required vehicle (ACC = Adaptive Cruise Control).

## ENGINE CONTROL MODULE PROGRAMMING

THE PERFORMANCE TUNE WILL TAKE APPROXIMATELY 40 MINUTES, AS  
THE ECU REQUIRES A FULL RELOAD  
ENSURE THE CAR BATTERY IS ON CHARGE

PLEASE CONFIRM PROGRAM SELECTION

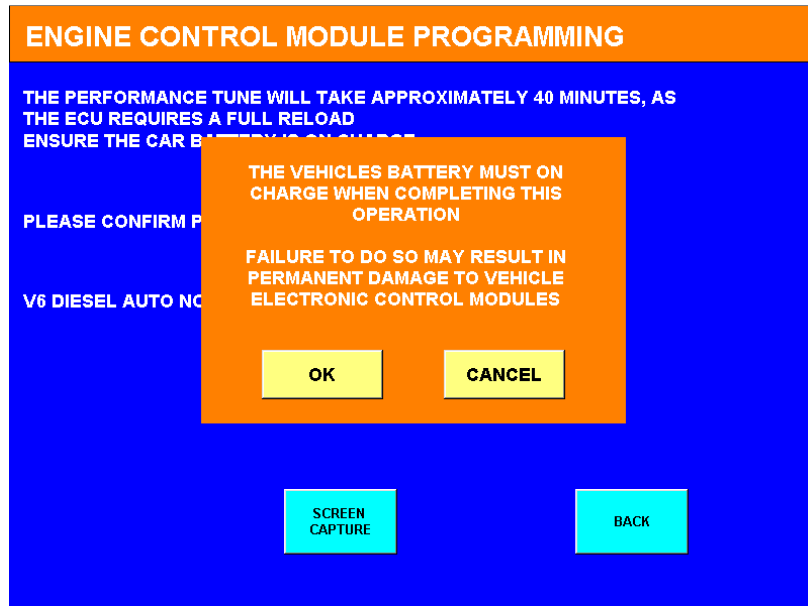
V6 DIESEL AUTO NON ACC PERFORMANCE TUNE

PROGRAM

SCREEN  
CAPTURE

BACK

The user is asked to confirm their selection, and an approximate time for programming is displayed. This can vary from 5 minutes to 40 minutes depending on the vehicle.



Finally, the Autologic asks if vehicle battery is on charge.

**ENGINE CONTROL MODULE PROGRAMMING**


THE PERFORMANCE TUNE WILL TAKE APPROXIMATELY 40 MINUTES, AS  
THE ECU REQUIRES A FULL RELOAD  
ENSURE THE CAR BATTERY IS ON A FULL CHARGE

PLEASE CONFIRM PROGRAMMING

V6 DIESEL AUTO NO

ENSURE IGNITION IS TURNED ON

PROGRAMMING 1



Programming commences.